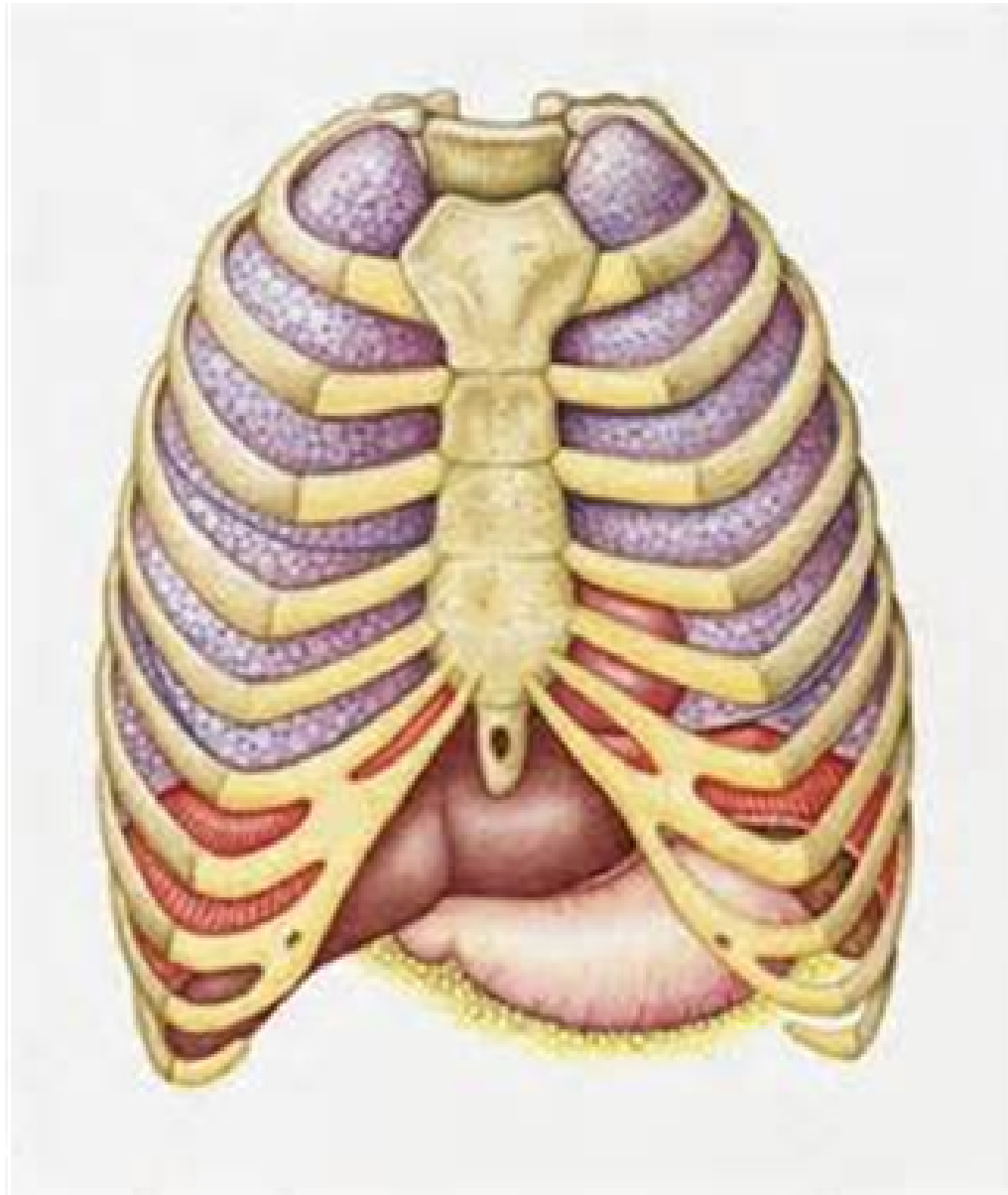


Rib Cage



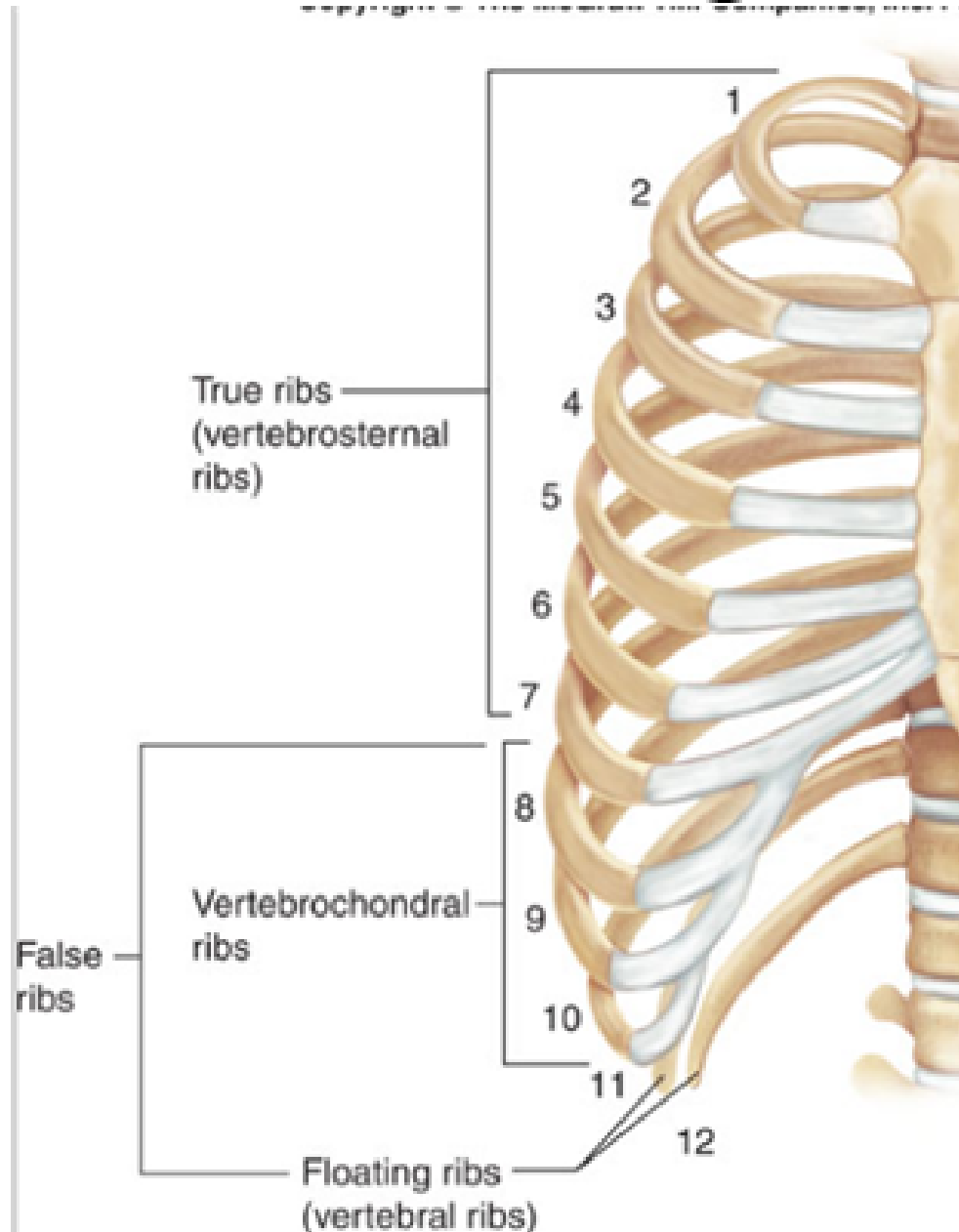
Rib Cage

- Also called 'thoracic cage'
- composed of the thoracic vertebrae, ribs, associated cartilage and sternum
- Protective yet flexible (inhale / exhale)
- Provides support for pectoral girdle

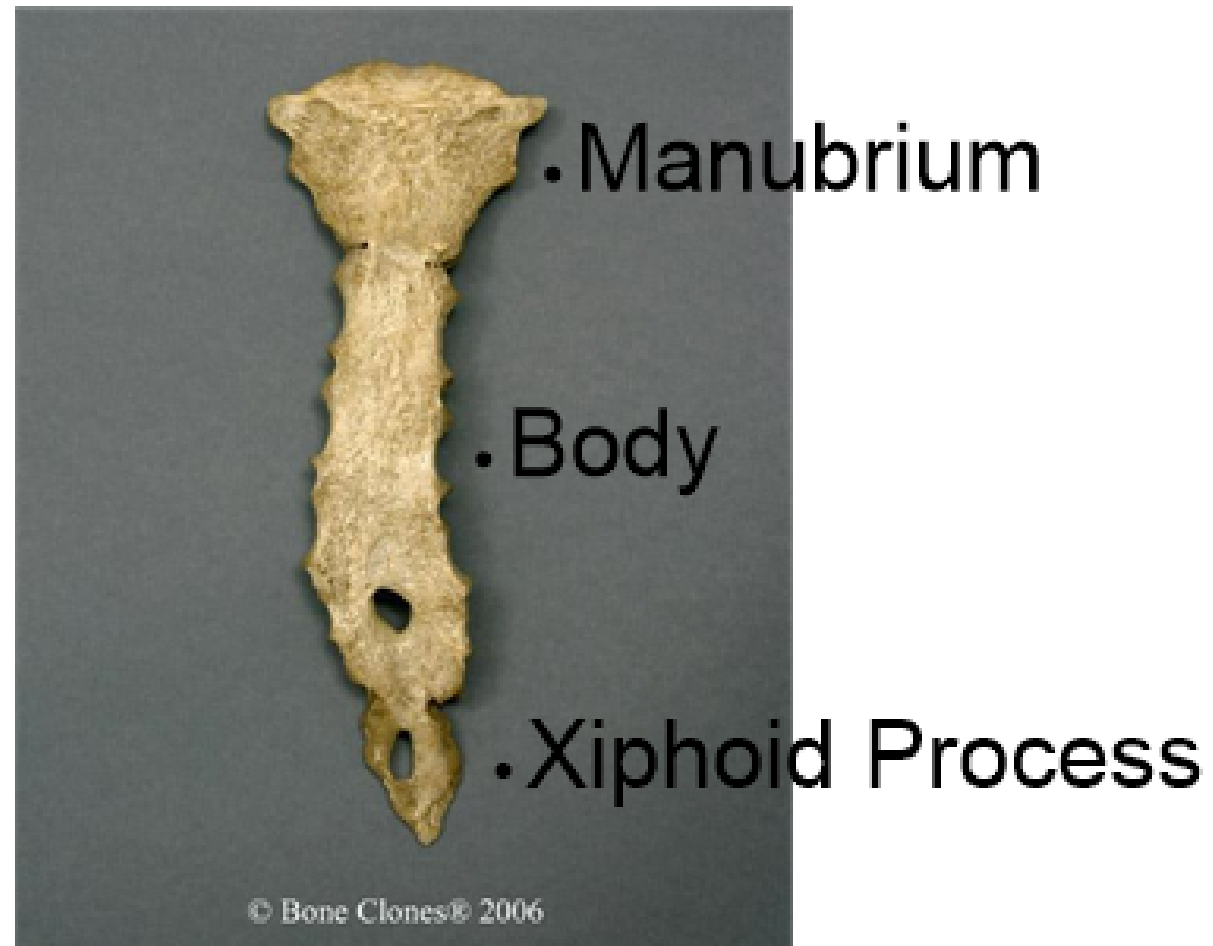
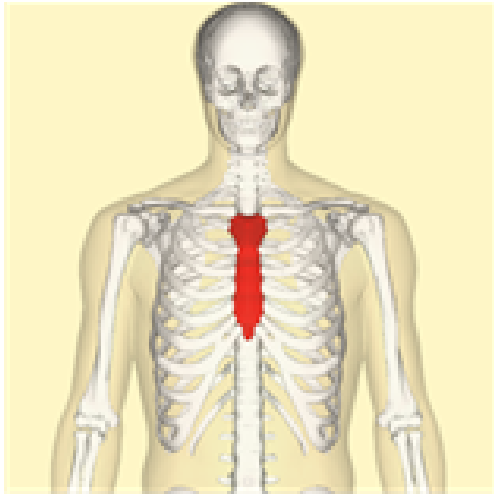
Rib Cage cont.

- 12 pairs of ribs connected directly to the thoracic vertebrae
- The upper 7 pairs of ribs connect directly to the sternum by costal cartilage (true ribs)
- The next 5 pairs of ribs attach indirectly to the sternum or don't attach at all (false ribs).
Ribs 8, 9, 10 attach to ribs above it (vertebrochondral ribs)
- Ribs 11 and 12 have no attachment to the sternum (Floating Ribs)

Rib Cage



Sternum



Sternum

- also called 'breastbone'
- flat bone the shape of a blade
- composed of 3 fused bones



Sternum

- Manubrium - superior portion of the sternum
- Body - middle portion of the sternum
- Xiphoid Process - inferior and smallest portion of the bone (cartilage as a child / ossified as an adult)

