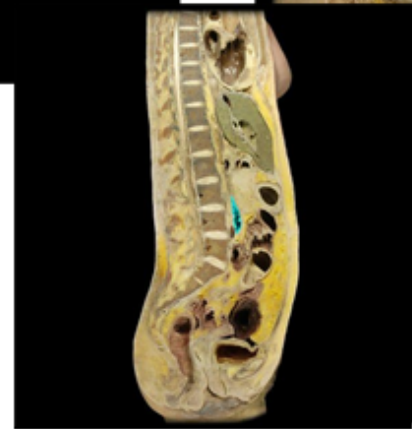
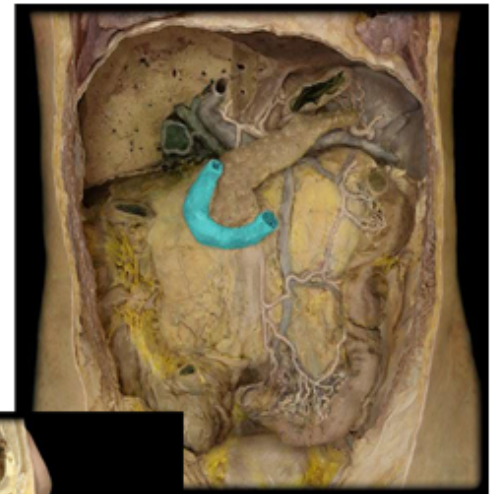




Regions of the Small Intestine

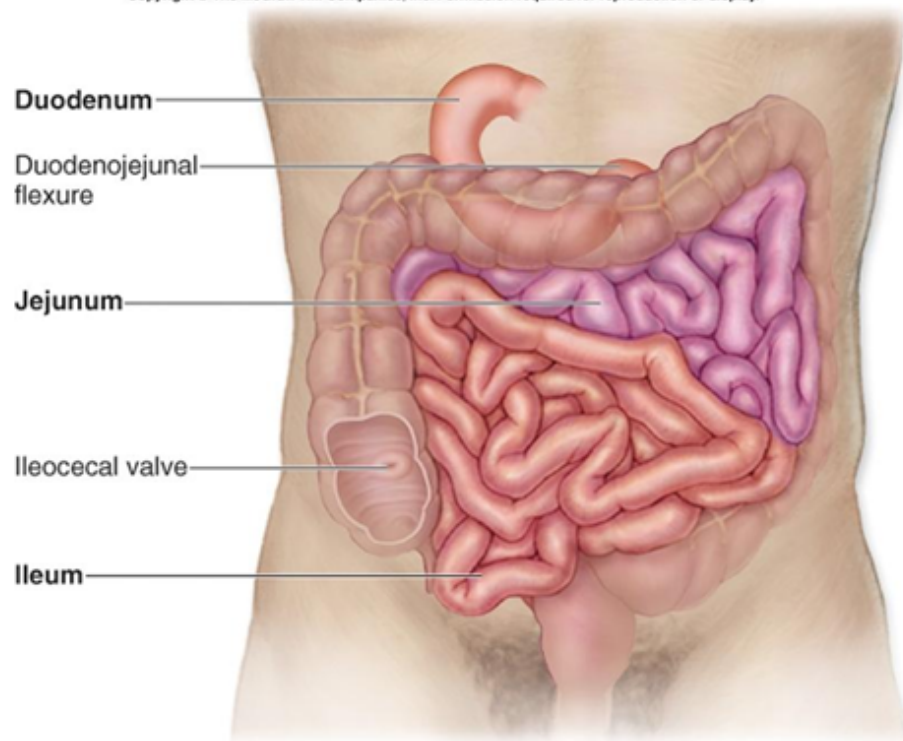
1. Duodenum - located right after the pyloric sphincter, contains glands that secrete mucus and receive pancreatic secretions and bile (emulsifies - causes droplets to disperse in water - fat) from the liver through a common duct



Regions of the Small Intestine

1. Jejunum - located after the duodenum, contains folds and villi that will absorb nutrients, about 3 feet long

Copyright © The McGraw-Hill Companies, Inc. Permission required for reproduction or display.



Regions of the Small Intestine

1. Ileum - located right after the jejunum, it is the longest section of the small intestine (over double the length of the jejunum), continues to absorb nutrients cease of villi, creates the attachment to the large intestine

