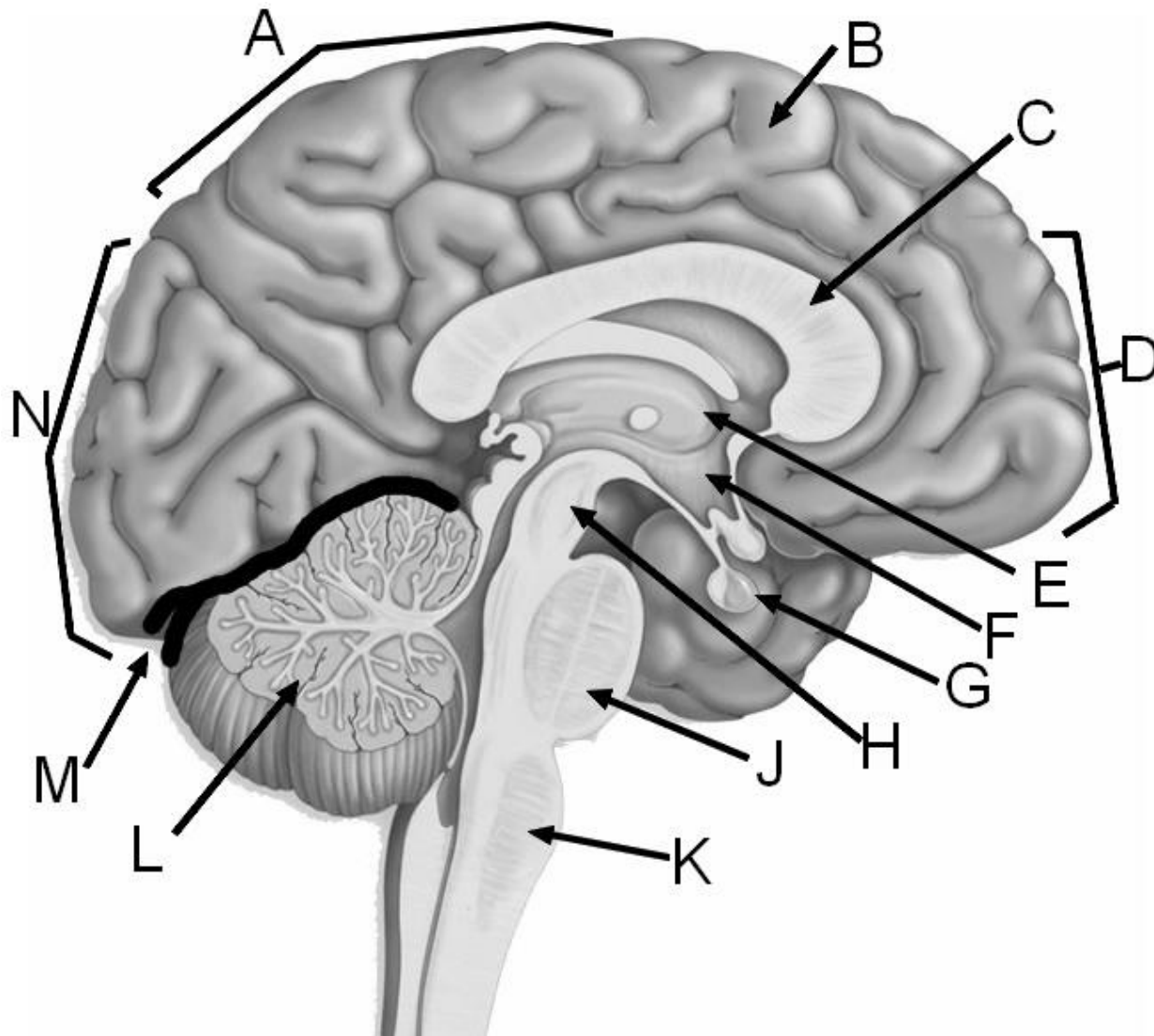


Name _____

Label the Brain – the parts in brackets are referring to specific lobes of the brain.



A =

B =

C =

D =

E =

F =

G =

H =

I =

J =

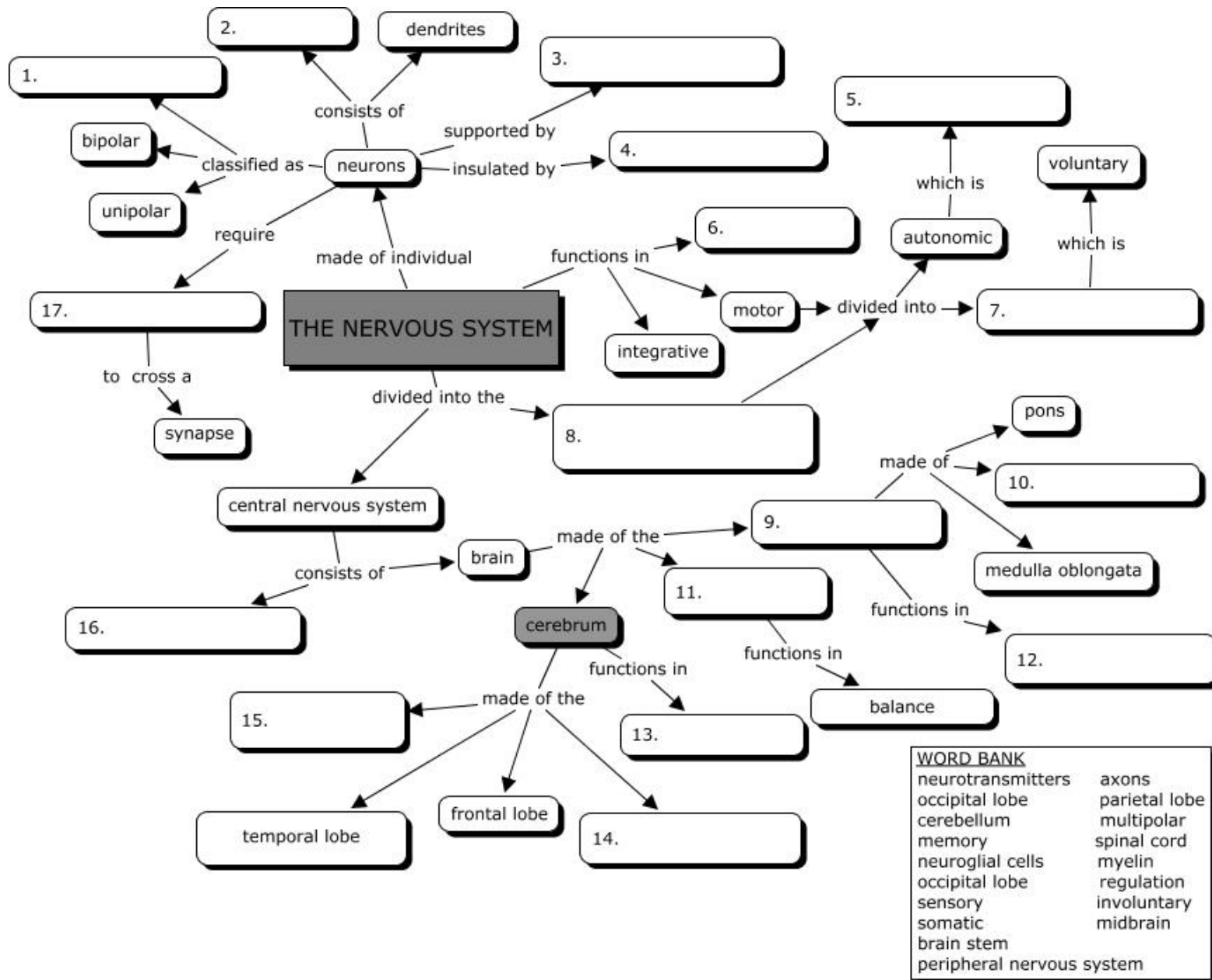
K =

L =

M =

N =

Nervous System Concept Map



Name: _____

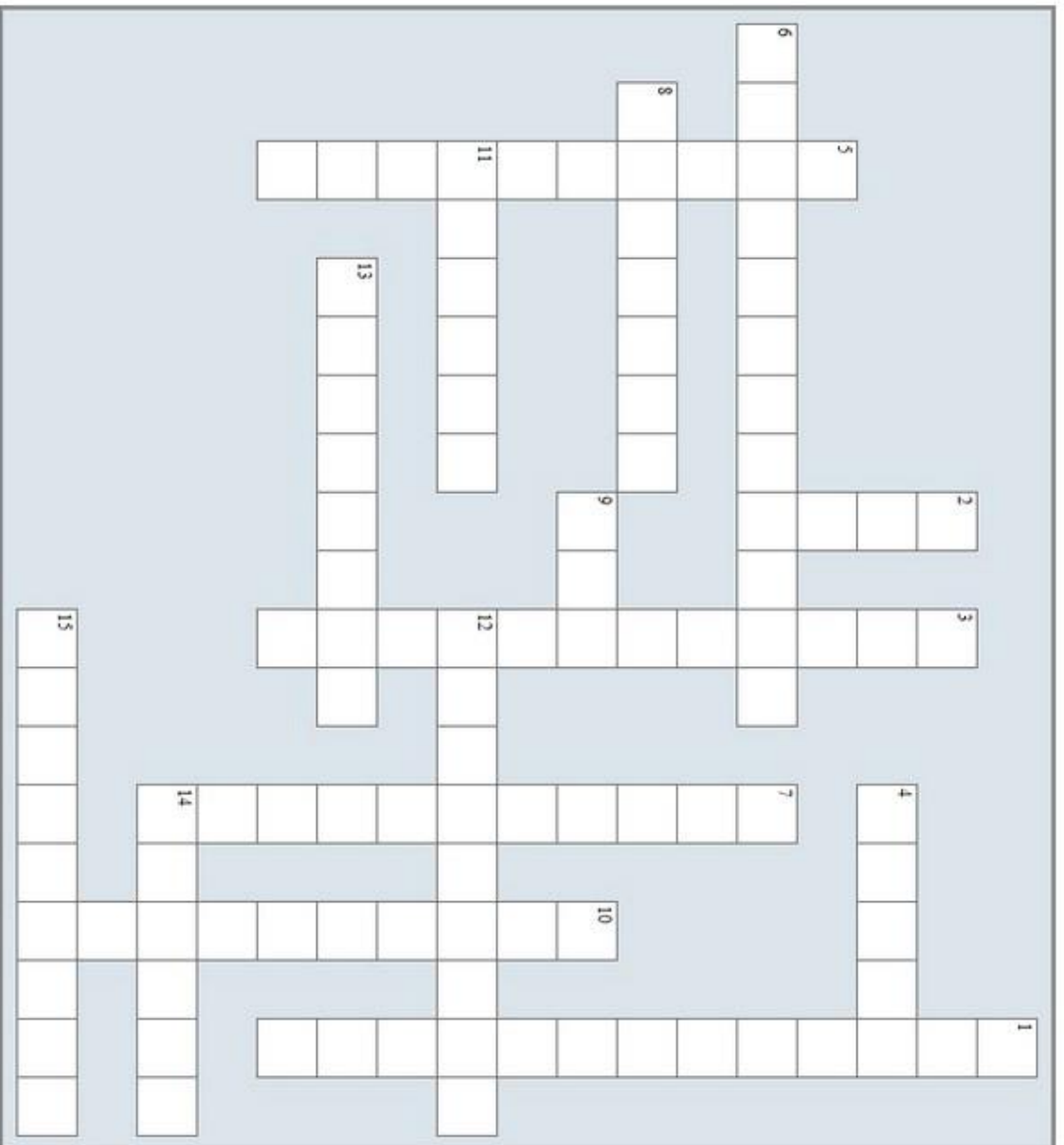
The Nervous System

Across

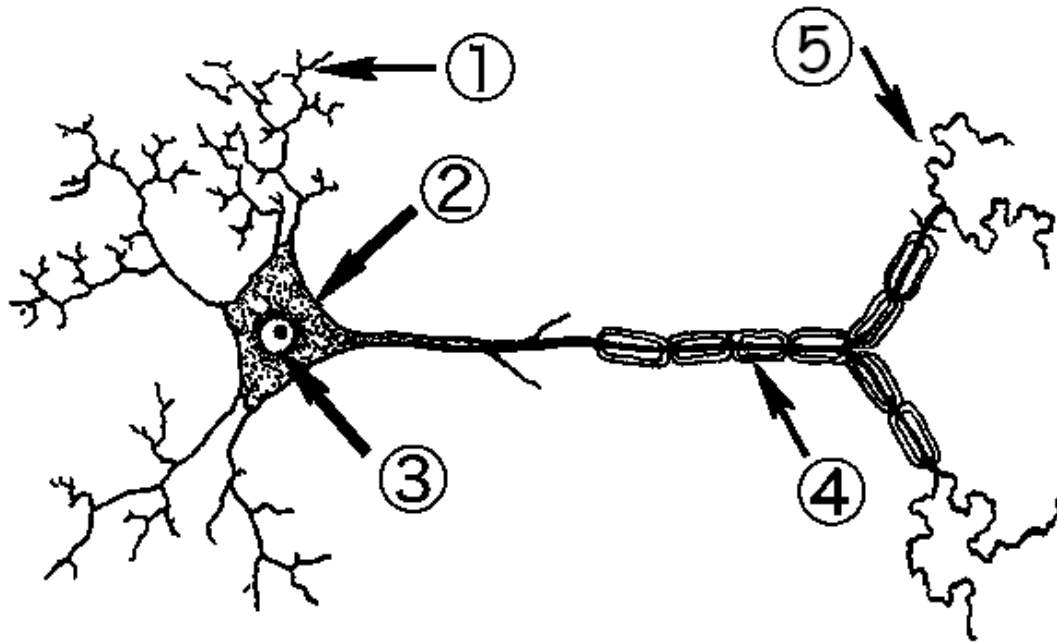
4. Descending tracts within the spinal cord carry _____ impulses to the muscles.
6. The thalamus and hypothalamus make up this part of the brain:
8. Ascending tracts within the spinal cord carry _____ impulses to the brain.
9. The innermost layer of meninges that supplies blood vessels to the brain and spinal cord is called the _____ mater
11. Controls emotional experiences and expression; _____ system
12. The thin, weblike membrane between the outer and inner layer of meninges is called the _____ mater
13. The _____ is the major part of the brain that controls sensory functions, motor functions and higher mental activities
14. shallow grooves between the gyri of the brain
15. Consists of the midbrain, pons, and medulla oblongata, connects brain to spinal cord

Down

1. The brain and spinal cord are surrounded (and float within) _____ fluid.
2. The outermost of the three meninges is the _____ mater
3. Responsible for regulation of the body, such as heart rate, body temperature and blood pressure
5. The _____ is the major part of the brain that controls the coordination of skeletal muscles and equilibrium.
7. This part of the brain was named after its shape (a seahorse) and is responsible for memory:
10. Fluid filled cavities within the brain



Label the Nueron



1 =
2 =
3 =
4 =
5 =

Fill in the Blank / Answer the questions

1. The largest part of the brain is the paired _____
2. The other major subdivisions of the brain are the _____ and the _____.
3. The cavities found in the brain are called _____ and contain _____.
4. The outermost covering of the brain, composed of tough fibrous connective tissue is called the _____.
5. The innermost covering of the brain that is delicate and very vascular is called the _____.
6. The middle meningeal layer; that has a cobweb like structure is called the _____.
7. In the list below, circle the structures that are NOT part of the brain stem.

Cerebral Hemisphere

Midbrain

Medulla

Pons

Cerebellum

Diencephalon