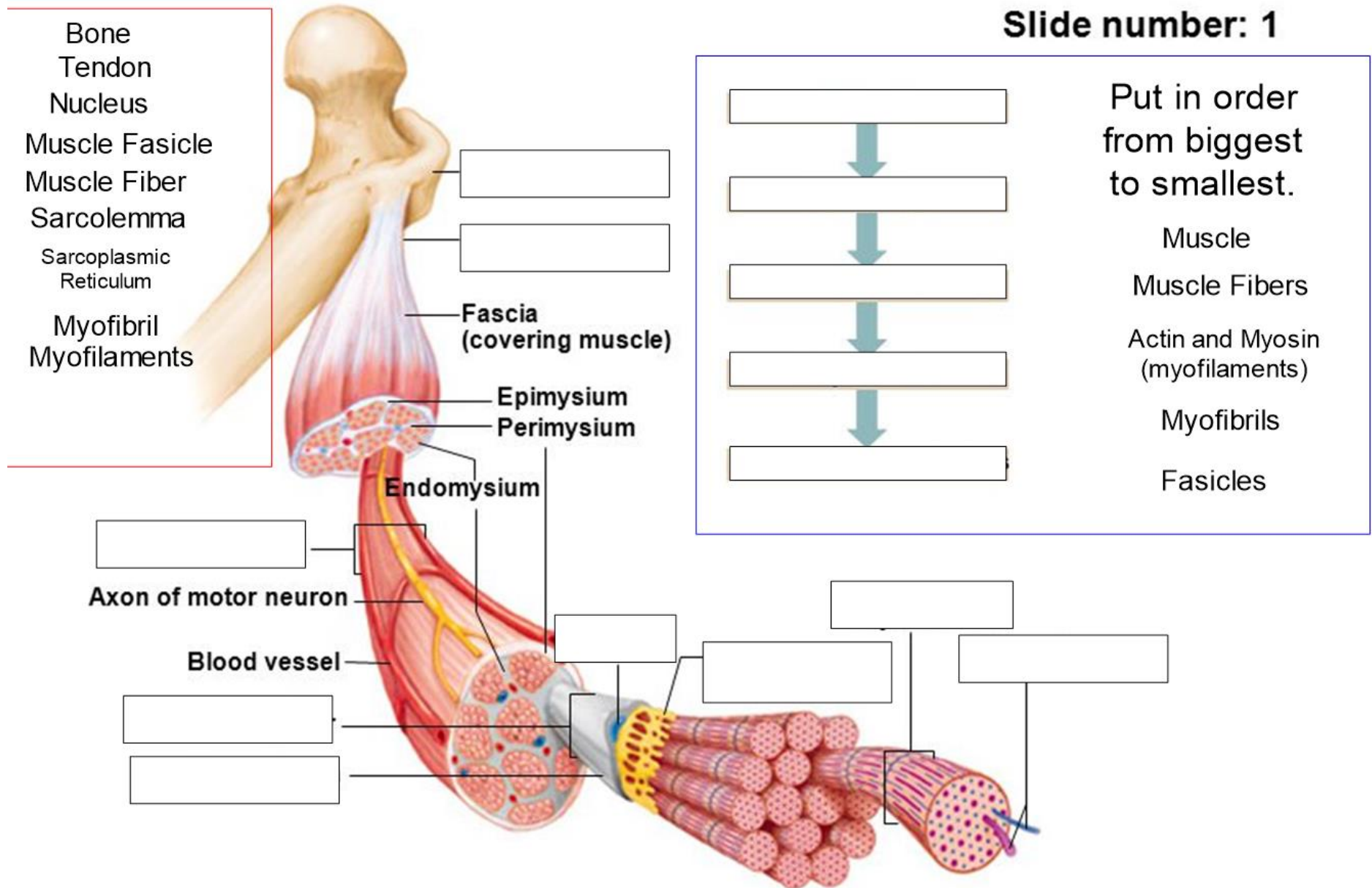
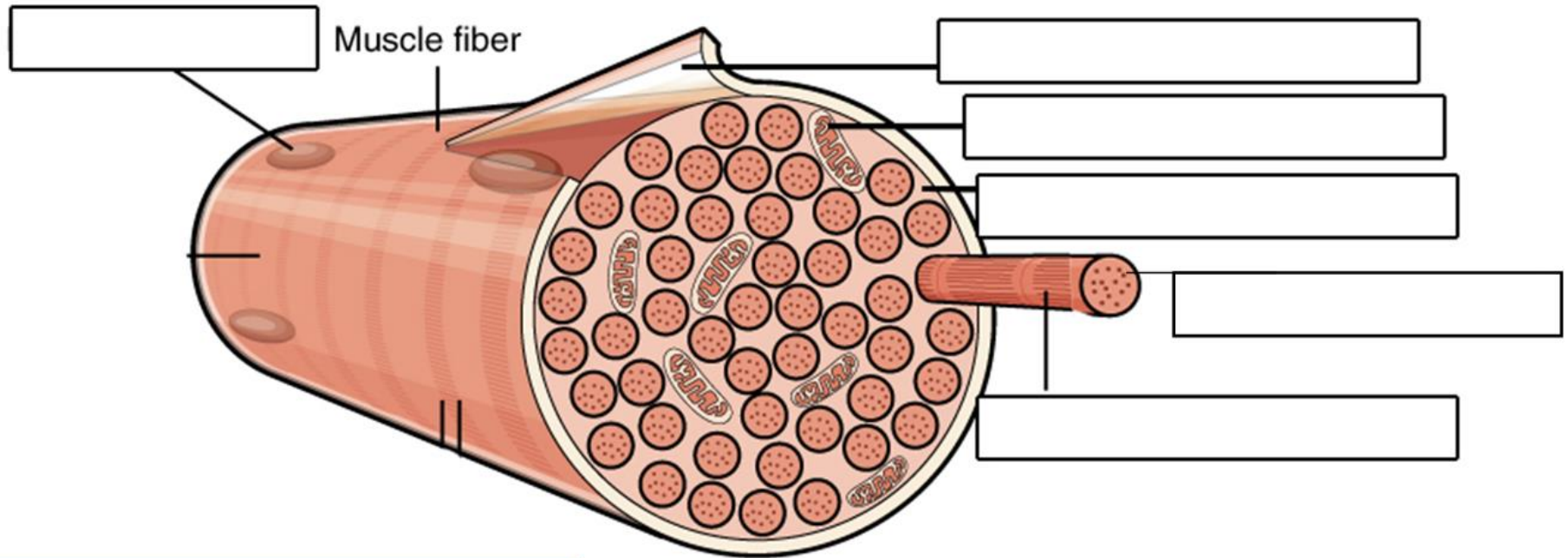


09_02 A skeletal muscle is composed of a variety of tissues

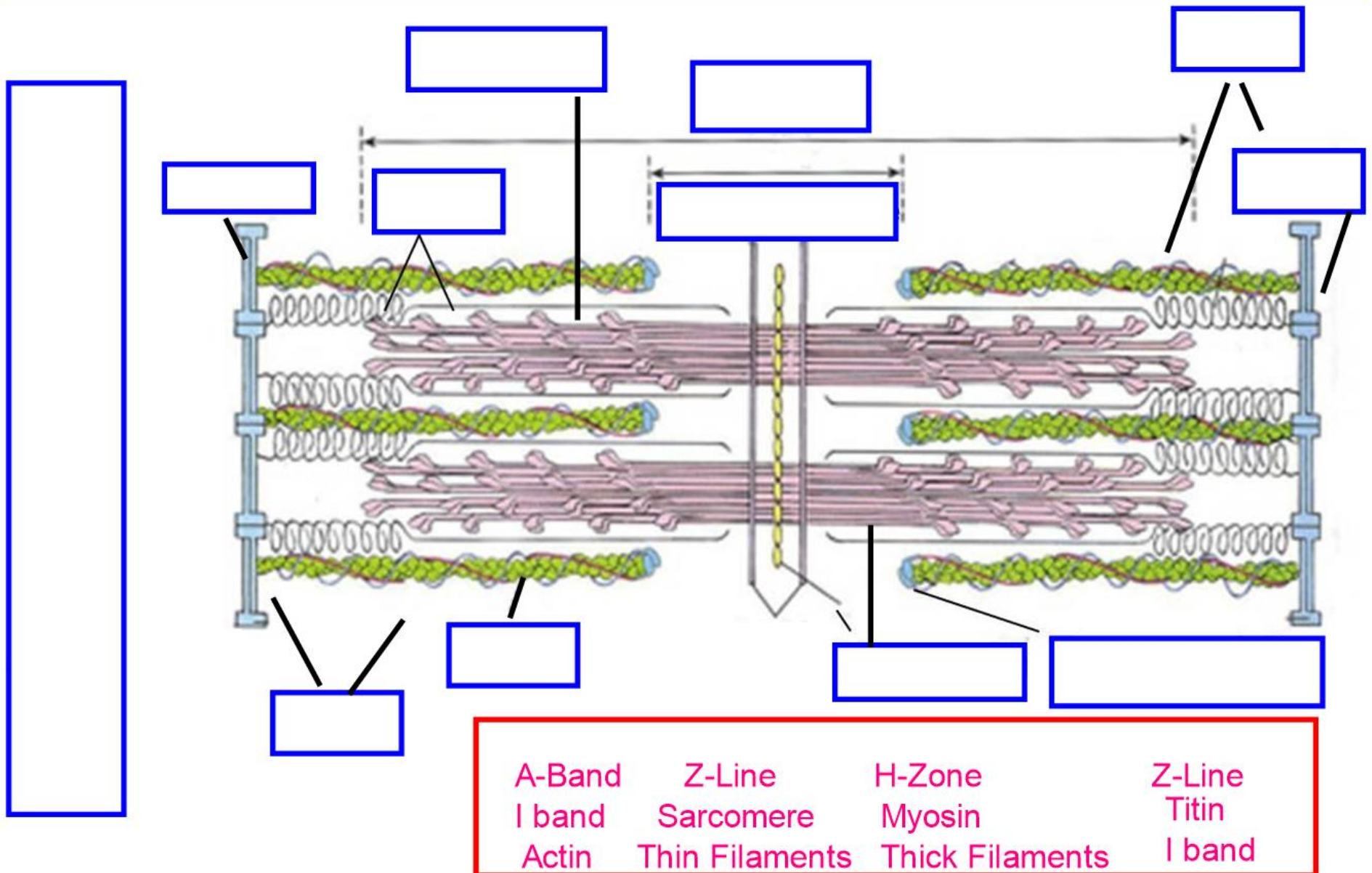
Slide number: 1



Lets Label a Muscle Fiber YAAAAAAAY



Label the Sarcomere!!!!!!



1. If sarcomeres are the boxcars, what is the train?
2. What 'extends' the sarcoplasmic reticulum to send messages to release Ca^{+2} ions?
3. What are the zigzagged dark vertical lines that 'bookend' each sarcomere?
4. What is the name of the energy source in muscle fibers?
5. Thin filaments are made up of this main protein for muscle contraction.
6. What is the name of cytoplasm when it is in a muscle fiber?
7. What is the name for the plasma membrane in a muscle fiber?
8. Thick filaments don't actually connect to the z-line. What is the name of the protein that connects them?
9. What is the name of the two main proteins that make up the myofilaments in muscle fibers?
10. What is the important ion needed for muscle contraction?
11. Put in Order from biggest to smallest: Myofibril, Muscle, Muscle Fascicle, Muscle Fiber, Sarcomere
12. What is the name of the endoplasmic reticulum in a muscle fiber?